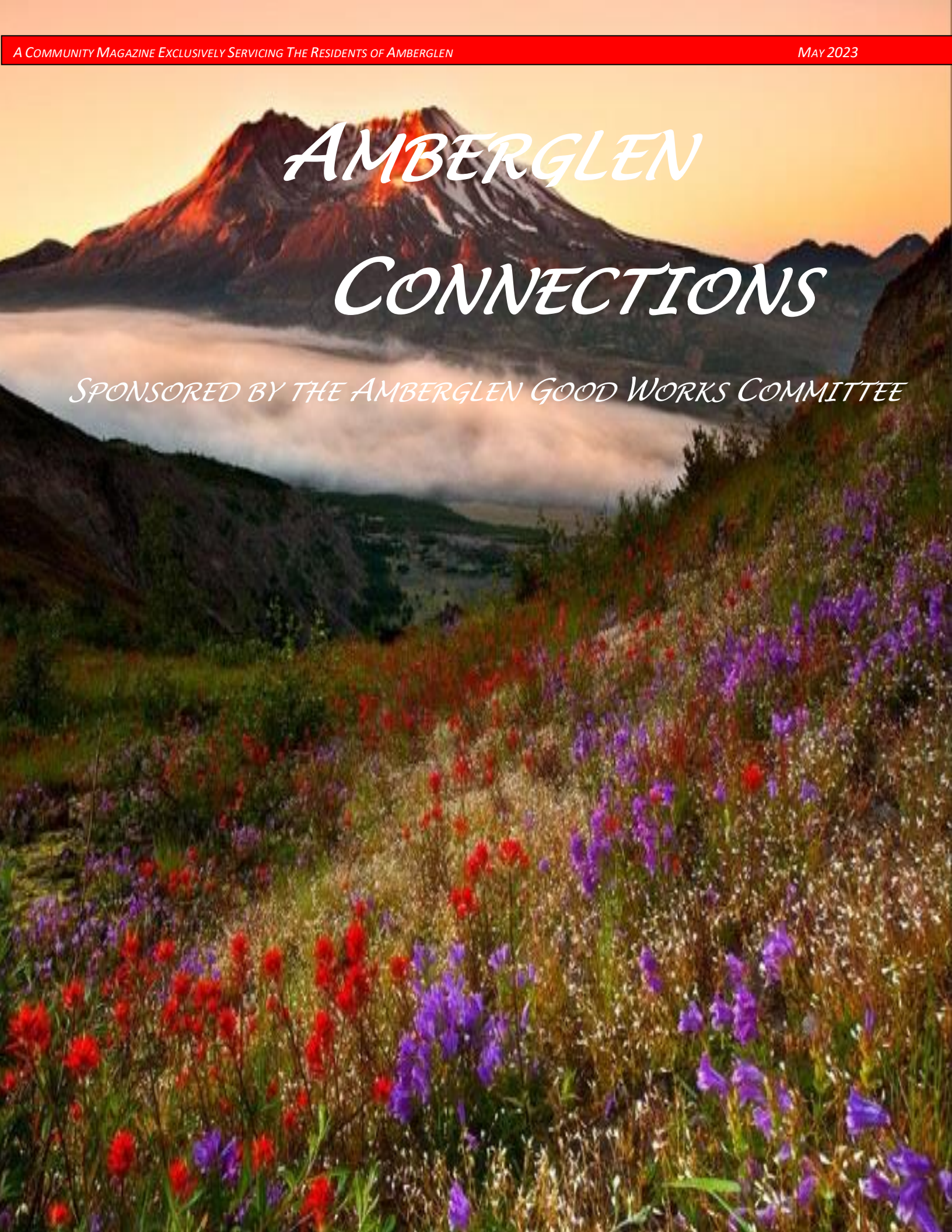


AMBERGLEN

CONNECTIONS

SPONSORED BY THE AMBERGLEN GOOD WORKS COMMITTEE



NOTE FROM THE PUBLISHERS/EDITORS

Deb & Ron Rowe

GREETINGS AMBERGLEN NEIGHBORS!

The featured cover picture is of Mount St. Helens as we see it today. This month marks the 43rd year since the massive eruption of Mount St. Helens. We wanted to honor the victims who lost their lives as a result of this devastating force of God, by letting you know who they were so they may be remembered. It brought tears to our eyes "experiencing" what they may have felt in their last moments. Please keep this in mind if you decide to read what they may have endured.

On a lighter note, I (Deb) studied Geology for three years with the hopes of becoming an anthropologist. However, at the time I was attending college, I had a two year old daughter that I was supporting on my own and could not find the funding to continue down that road. So, I changed my love of digging in the dirt to digging up dirt and became a technical writer. But my love of the land and its history is still within me and I would like to share some geological facts such as the ones I am featuring in this issue about the greater Northwest in future newsletters. Knowing the land we share with our neighbors and animal friends sparks a greater respect for both the land and those who we share it with. We hope you will enjoy the featured articles.

We are also looking for "Nature" pictures of our beautiful community. Please feel free to send your pictures to: amberglenconnections@gmail.com

Regards,

Deb and Ron Rowe





AMBERGLEN CONNECTIONS

SPONSORED BY THE AMBERGLEN GOOD WORKS COMMITTEE

PUBLICATION TEAM

Designer/Publisher/Writer: Deb Rowe
In, Out, & About in Greater WA / Ore: Shane LaBeck

Content Coordinators/Editors: Deb Rowe, Nick Rexing,
Karen Williams, Ron Rowe, John Grant, and Don Covert

Pictures courtesy of Carolyn McDonald and Emilee Natiola

IMPORTANT PHONE NUMBERS

- Battle Ground Fire and Rescue-Station 26360-687-4535
- Clark County Fire District 6.....360-576-1195
- Clark Public Utilities360-992-3000
- Clark Regional Wastewater District360-750-5876
- City of Vancouver Utility Services360-487-7999
- Clark County Sheriff360-397-2211
- Emergency..... 911
- Gaiser Middle School360-313-3400
- Laurin Middle School360-885-5200
- Mental Health/Behavioral Crisis 988
- Non-Emergency360-693-3111
- Pleasant Valley Middle School.....360-885-5500
- Pleasant Valley Primary School360-885-5500
- Prairie High School.....360-885-5500
- Waste Connections.....360-892-5370
- Washington State Patrol360-449-7999

FEEDBACK/ IDEAS/ SUBMISSIONS

Have feedback, ideas or submissions? We want to hear from you! Deadline for submission is the 7th of each month, one month prior to the publication of the newsletter in which the content is scheduled to appear. Submit submissions to amberglenconnections@gmail.com

TABLE OF CONTENTS

- [Amberglen HOA Board Insights..... 4](#)
- [AGW Committee Insights 4](#)
- [In, Out & About Greater WA / ORE 4](#)
- [AGW's Summer Events.....5](#)
- [AGW Summer Potluck6](#)
- [Amberglen Featured Pet..... 7](#)
- [May Fun Facts 8](#)
- [May Tasty Tidbits 9](#)
- [A Volcanic Giant Awakens 10](#)
- [Mount St. Helens Victims Found..... 11](#)
- [Mount St. Helens Victims Never Found..... 14](#)
- [Crossword Puzzle 16](#)
- [Sudoku \(Easy\)..... 17](#)
- [Homes Pending & Sold In 98686..... 18](#)



Amberglen Connections newsletter is currently online at:

<https://amberglengoodworks.com>

Scan the QC Code to get to the site



AMBERGLEN HOA BOARD INSIGHTS

The Amberglen HOA Board has nothing to report at this time.

IN, OUT & ABOUT GREATER WA / ORE

If you find yourself with free time, here are a few suggestions for activities near our community.

- [Paranormal Cirque II - Vancouver, WA \(cirqueitalia.com\)](http://cirqueitalia.com)
Recurring daily until May 8, 2023
- [Vancouver Volcanoes Home Game](#)
Dates: 5/5/2023, 5/7/2023, 5/13/2023, 5/26/2023
- [Savor SWWA Wine](#) 5/6
- [Vancouver - Cystic Fibrosis Foundation \(cff.org\)](http://cff.org) 5/13
- [Wellness in the Park - Vancouver Direct Primary Care](#)
Multiple Dates – May 14th being the first
- [2023 Walk to Defeat ALS® \(Lou Gehrig Disease\) SW Washington - ALS Oregon](#) 5/21
- [Vancouver Farmers Market](#)
Recurring weekly on Sunday, Saturday
- [Society of WA Artists 2023 Annual Spring Art Show](#)
5/9/2023, 5/10/2023, 5/11/2023, 5/12/2023, 5/13/2023
- [Comedy on Tap](#)
Recurring monthly on the 2nd Thursday
- [Battle Ground Farmers Market](#)
Recurring weekly on Thursday
- [Laughs on Loowit: A Free Comedy Show](#)
Recurring monthly on the 2nd Saturday

If you want to share an Amberglen community event or other events/activities, send an email to:

amberglenconnections@gmail.com.

AGW COMMITTEE INSIGHTS

The AGW Committee would like to inform you of a few upcoming scheduled events in order to allow you to “save the date” if you are interested in participating. Please see page 5 of this newsletter or go to:

<https://www.amberglengoodworks.com/agw/comimg-soon/>

*We hope you will join us
for these events!*

AGW's SUMMER EVENTS

For detailed information about all upcoming events and projects, take a look at <https://www.amberglengoodworks.com/agw/coming-soon/>

AGW Little Free Library Installation

Saturday, May 20, at 10am.

Join us near the Amberglen mailboxes to help us install and celebrate our new Little Free Library.

See our website or contact Karen (661-313-3425) for more details.

AGW Pizza Social

Monday, May 29, June 26, July 31, and August 28, from 6pm to 8pm.

Join us at the Hazel Dell Round Table Pizza (616 NE 81st St., Suite A) to enjoy a pizza with your neighbors and help us plan future AGW events.

See our website or contact Chuck (253-905-9876) for more details.

Amberglen Neighborhood Garage Sale

June 10 and 11 (Saturday and Sunday), from 8am to 1pm.

Sell those unneeded household items from your own driveway or garage. AGW will provide all advertising and post signs outside the neighborhood.

(We ask that you donate 10% of your proceeds to AGW.)

See our website or contact Karen (661-313-3425) for more details.

Amberglen Summer Potluck

Saturday, June 24, from 11am to 3pm.

Join your neighbors on the cul-de-sac (NE 68th Ct.) for food, drink, music, games, raffles, and even a food contest!

Beer, wine, water, and juices provided by AGW.

Contact Sue (360-314-8191) or Ingrid (512-639-4241) to coordinate what to bring.

See our website or contact John (503-201-7856) for more details.

AGW Adopt-a-Road Workday

Saturday, July 8, from 9am to 2pm.

Volunteer your time to help us keep the roads around Amberglen clean.

See our website or contact Chuck (253-905-9876) for more details.

AGW School Lunch Assistance Program

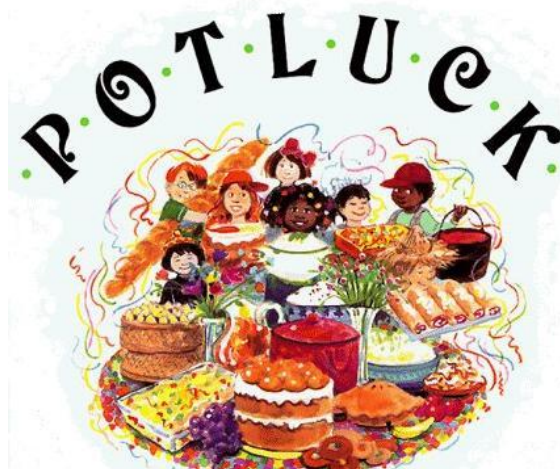
Help Pleasant Valley Elementary School provide meals to children who are unable to afford them.

\$300 has been collected thus far by AGW, but the current debt is over \$3,000.

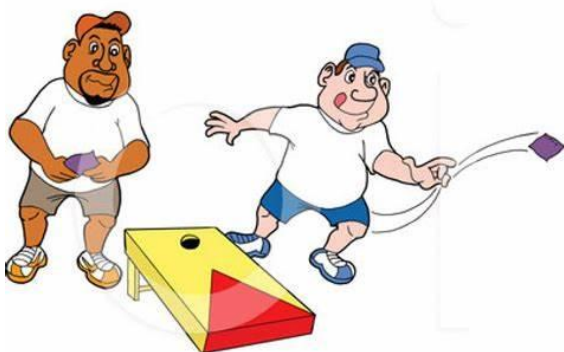
AGW volunteers are collecting donations. Please write your check to BGPS.

See our website or contact Sue (360-314-8191) for more details.

AGW SUMMER POTLUCK

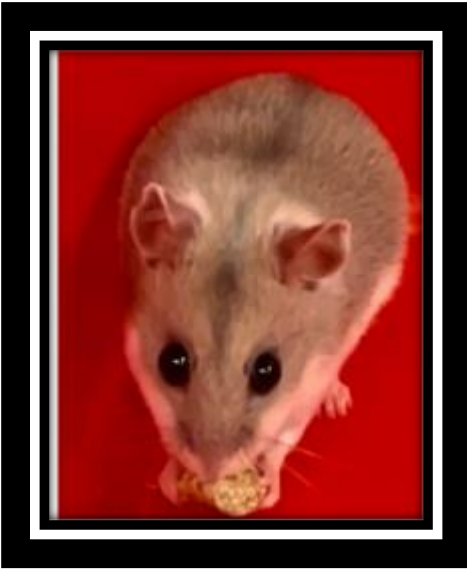


Dig out your favorites recipes and join your neighbors at the cul-de-sac on NE 68th Ct. for the Amberglen Summer Potluck. This free community event organized and sponsored by Amberglen Good Works, will take place on Saturday, June 24, starting at 11am. Beverages will be provided by AGW volunteers, including beer, wine, water, and fruit juices (any other beverages are BYO). The food, however, is on you: Contact Sue Nelson (360-314-8191) or Ingrid Fullard (512-639-4241) to talk about what you can bring. They will help coordinate foods so we don't end up with sixty versions of Aunt Bea's Ambrosia Delite! You'll also be encouraged to enter your delicacy into the Potluck Food Contest. Prizes will be awarded for the best entries in each of three categories: proteins, salads, and desserts. Other party activities will include games (run by Ron and Deb, just as they did for the Amberglen Holiday Party) and a raffle, with raffle tickets awarded based on participation in the various other activities. And as is the case for other AGW events, this potluck will also be a benefit event for the Clark County Food Bank. Please bring food to donate; the more you bring, the more raffle tickets you'll be awarded. Put the date on your calendar now and enjoy some summer fun with your neighbors.



*WE HOPE TO
SEE YOU THERE!*

AMBERGLEN FEATURED PET



*I JUST LOVE MY FLAXSEED BARS FROM
GOOD OL' PETSMAART!*

*YOU THOUGHT APRIL WAS
DONE, BUT I HAVE JUST BEGUN!*

Hi! My name is April Natiola. I am a Chinese Dwarf Hamster. I am all of 4 inches tall but I am a mighty presence in my household! My kind originated from Northern China and areas of Mongolia. We were discovered in 1900 but were not introduced into the pet market until the 1960s.

What makes me different from other hamsters is my very long, thin body shape and my noticeably long tail, measuring up to 1 inch in length. My long tail helps me grip onto branches, cage bars and even your fingers!

In some U.S. states, such as California, Hawaii, Oregon, and New Jersey, I am regarded as an exotic animal and require a special permit to own, breed or sell. Lucky for me, Washington is not one of them! I guess that makes me kind of special! So, if I originated in China, just how did I get here? Well, let me explain how I came to be adopted by my family.

My older sister, Hailee Natiola really wanted a hamster, so on her 11th birthday, she used all of her birthday money to adopt me and give me a great home. Thank goodness Mom agreed!

Now I am living my best life munching on my favorite fruits and veggies and running on my "treadmill". Listen for the sound of my wheels... when I get on a roll, you can hear me from upstairs!



MAY FUN FACTS

May (Latin, *Maius*) was named for the Greek goddess Maia, who was identified with the Roman era goddess of fertility, Bona Dea, whose festival was held in May. Conversely, the Roman poet Ovid provides a second etymology, in which he says that the month of May is named for the *maiores*, Latin for "elders," and that the following month (June) is named for the *juniores*, or "young people" (*Fasti VI.88*).

May is a month of spring in the Northern Hemisphere, and autumn in the Southern Hemisphere. Late May typically marks the start of the summer vacation season in the United States (Memorial Day).

[Eta Aquariids](#) meteor shower appears in May. It is visible from about April 19 to about May 28 each year with peak activity on or around May 5.

FASCINATING FACTS ABOUT MAY BABIES

- May babies are among the tiniest. Some studies say that the babies with the lowest birth weight are born in May — chalk it up to the lower amounts of vitamin D in the womb during a winter pregnancy.
- Children Born In May Might Have a Lower Risk of Disease
- Babies Born in May Are Night Owls
- Babies in May Have the Rarest Birthstone
- May babies have positive attitudes
- May babies' birth flowers are sweet and hopeful.

HISTORICAL EVENTS

- May 5, 1961 - Alan Shepard became the first American in space. He piloted the spacecraft *Freedom 7* during a 15-minute 28-second suborbital flight that reached an altitude of 116 miles (186 kilometers) above the earth.
- May 7, 1992 - The 27th Amendment to the U.S. Constitution was ratified, prohibiting Congress from giving itself pay raises.
- May 15, 1972 - George Wallace was shot while campaigning for the presidency in Laurel, Maryland. As a result, Wallace was permanently paralyzed from the waist down.
- May 17, 1792 - Two dozen merchants and brokers established the New York Stock Exchange. In good weather they operated under a buttonwood tree on Wall Street. In bad weather they moved inside to a coffeehouse to conduct business.
- May 18, 1980 - Mount St. Helens volcano erupted in southwestern Washington State spewing steam and ash over 11 miles into the sky. This was the first major eruption since 1857.
- May 21, 1991 - Former Indian Prime Minister Rajiv Gandhi was assassinated in the midst of a re-election campaign, killed by a bomb hidden in a bouquet of flowers.

FUNNY QUOTES AND SAYINGS

- ❖ "I've got sunshine on a cloudy day. When it's cold outside, I've got the month of May." – Smokey Robinson
- ❖ "The last days of May are among the longest of the year." – Alice Munro
- ❖ "May: the lilacs are in bloom. Forget yourself." – Marty Rubin
- ❖ "And after winter folweth grene May." – Geoffrey Chaucer

MAY TRIVIA (ANSWERS ON LAST PAGE)

1. What did Levi Strauss and Jacob Davis officially invent in May, 1873?
2. May is the only month to start and end on what?
3. What do May babies tend to be compared to babies born during other months?
4. True or False: Babies born in May are thought to be more successful in later life.
5. In 1856, what type of martial art started its own world championship?
6. In May 2020, what were Americans able to do at home for the first time?
7. True or False: The median price for a home in 1988 was \$77,700.
8. What prestigious American figure has never died during this month?
9. Which island country did Christopher Columbus discover on May 3, 1494?

MAY TASTY TIDBIT

TERIYAKI CHICKEN FOIL PACKETS

INGREDIENTS

- 1 small head broccoli
- 2 medium red bell peppers
- 2 large carrots
- 2 cups teriyaki sauce, divided
- 1 1/2 teaspoons kosher salt, divided
- 1 teaspoon freshly ground black pepper, divided
- 4 (6-ounce) boneless, skinless chicken breasts



DIRECTIONS

1. Heat an outdoor grill to medium-high, direct heat. Prepare 4 (10-inch long) sheets of aluminum foil.
2. Prepare the following, placing them all in the same large bowl: Cut 1 small head broccoli into florets, slice 2 medium red bell peppers, and peel and slice 2 large carrots. Add 1 cup of the teriyaki sauce, 1/2 teaspoon of the kosher salt, and 1/2 teaspoon of the black pepper. Toss to combine.
3. Divide the vegetable mixture between the 4 sheets of foil, leaving a 2-inch border on all sides. Season 4 boneless, skinless chicken breasts with the remaining 1 teaspoon kosher salt and remaining 1/2 teaspoon black pepper, then place a breast on each vegetable pile. Pour the remaining 1 cup teriyaki sauce over the chicken.
4. Fold the sides of the foil to meet over the center, then crimp the edges together to create completely sealed packets. Place the packets directly onto the grill grates, cover, and grill until the chicken is cooked through and the vegetables are tender, 20 to 25 minutes. Let cool for 10 minutes before opening the packets and serving.

EASY FRUIT TART

INGREDIENTS

- 1 cup Blackberries
- 1/3 cup Blueberries
- 1/2 Lemon, Juice of
- 2 Mandarins
- 1 cup Raspberries
- 1 cup Strawberries
- 1/4 cup Apricot preserves
- 1 1/3 cup All-purpose flour
- 1 tsp Almond extract
- 1/4 cup Granulated sugar
- 1/2 tsp Kosher salt
- 1/2 cup Powdered sugar
- 10 tbsp Butter
- 4 oz Cream cheese
- 1/2 cup Heavy cream
- 1 (8-oz.) container Mascarpone cheese



DIRECTIONS

1. Make crust: Preheat oven to 350°. In a large bowl, whisk together flour, sugar, and salt. Add melted butter and almond extract and stir until dough forms. Press mixture into a 10" tart pan with a removable bottom, pressing dough all the way up the sides and until dough is smooth.
2. Prick all over with a fork and bake until golden, 20 to 25 minutes. Let cool completely.
3. Make filling: In a medium bowl using a hand mixer beat heavy cream until stiff peaks form. In a large bowl, beat mascarpone and cream cheese until smooth. Add powdered sugar, lemon juice, and almond extract and beat until no lumps remain. Fold in whipped cream.
4. Spread filling over cooled crust and arrange fresh fruit on top.
5. In a small microwave-safe bowl, heat together preserves and 2 teaspoons water until warmed, 30 seconds. Brush over tart and refrigerate until well chilled, 2 hours.

A VOLCANIC GIANT AWAKENS



THE DAY MOUNT ST. HELENS "ROARED"

*MAY 18, 1980, MOUNT ST. HELENS
SHOCKED THE NATION WHEN IT
ERUPTED AFTER BEING DORMANT FOR
OVER A CENTURY (1840s/1850s
UNTIL MARCH 1980)*

Mount St. Helens is the youngest volcano in the Cascades, about 40,000 years old, its peak back in 1980 was about 2,500 years old, which was a result of great eruptions in the past 3,000 years. This majestic mountain had been silent for well over a century, since 1840/1850.

On March, 17, 1980, a small earthquake awoke the colossal beast from its long slumber and one week later a minor eruption blew a hole in the top of the mountain, forming a crater and spewing ash approximately two miles into the air.

From March through May, Mount St. Helens rumbling became alarmingly frequent and an unusual bulge was forming on the north flank of the mountain. However, by May 15, the mountain seemed to settle, the earthquakes and eruptions appeared to stop...but the bulge continued to grow.

On Sunday, May 18, 1980, at 8:32 am, a 5.1 earthquake jolted the mountainside, releasing about 26 megatons of TNT sending a towering plume of ash and pumice into the sky (eventually blanketed the Pacific Northwest, stretching across 11 states and into Canada. The USGS said it took just two weeks for the ash from the eruption to circle the globe).

Within 15 minutes, the plume reached an elevation of 80,000 feet, about twice as high as commercial airlines fly. At the time of the explosion, a 747 jet, flying from Reno, Nevada to Vancouver, Canada at 6,000 feet was 40 miles south of Mount St. Helens. The pilot saw the explosion and swung the plane away from his course since the path would have taken the plane directly over the eruption. In doing so, he was able to keep the plane out of the immense gray cloud rising to meet them. The shock of the explosion rocked the 747 like a ship at sea during a heavy storm.

Those who were near enough to see the mountain at the time of the explosion said the north flank appeared to simply melt away. This caused the largest landslide recorded in Earth's history. The landslide travelled at 69 to 149 miles per hour, with a depth of 590 feet. The eruption obliterated everything in its direct path. The peak of the mountain lost 1,300 feet, resulting in Mount St. Helens now being 8,365 feet as opposed to the 9,677 feet. Once known as the fifth highest peak in Washington state, Mount St. Helens has now moved to the 30th highest peak in Washington state.

The eruption not only changed hundreds of square miles of a very picturesque mountainside and its surrounding areas, but destroyed 200 homes, 47 bridges, railways, and highways resulting in \$1 billion in damages, and killed at least 57 people, including two photographers and a geologist.

The next few pages recognizes those who lost their lives when Mount St. Helens erupted. Some were whole families enjoying the outdoors, camping with their loved ones. Others were fishing, painting, and enjoying the beauty of the outdoors. A few were monitoring the mountain for potential signs of danger. The mountain had been silent for four days and these people were told as long as they stayed out of the "red zone" they should be safe. Unfortunately, nature is unpredictable and Mount St. Helens showed us just how true that is.

MOUNT ST. HELENS VICTIMS FOUND (1 OF 3)

DISPUTED DEATH TOLL

The death toll most commonly cited is 57, but two points of dispute remain. The first point regards two officially listed victims, Paul Hiatt and Dale Thayer. They were reported missing after the explosion. In the aftermath, investigators were able to locate individuals named Paul Hiatt and Dale Thayer who were alive and well. However, they were unable to determine who reported Hiatt missing, and the person who was listed as reporting Thayer missing claimed she was not the one who had done so. Since the investigators could not thus verify that they were the *same* Hiatt and Thayer who were reported missing, the names remain listed among the presumed dead. The second point regards three missing people who are not officially listed as victims: Robert Ruffle, Steven Whitsett, and Mark Melanson. Cowlitz County Emergency Services Management lists them as "Possibly Missing — Not on the official List". According to Melanson's brother, in October 1983, Cowlitz County officials told his family that Melanson "is believed a victim of the May 18, 1980, eruption" and that after years of searching, the family eventually decided "he's buried in the ash".

Taking these two points of dispute into consideration, the direct death toll could be as low as 55 or as high as 60. When combined with the four indirect victims (a crop duster that crashed after hitting powerlines during the ashfall, one dying from a vehicle accident due to poor visibility, and two dying from heart attacks triggered by shovelings ash) those numbers range from 59 to 64 victims.

Reid Turner Blackburn (27)



Vancouver, WA

A photographer for *The Columbian* newspaper who was donating his time to the U.S. Geological Survey and *National Geographic* magazine at the time of the eruption. He was camped at Coldwater I, 7 miles from the mountain. When the volcano erupted, he was able to take a few photographs before jumping in his car. But before he could drive away, the car filled with ash and he died of suffocation. All of his photographs were destroyed by the heat of the blast cloud.

Terry A. Crall (21) Karen Marie Varner (21)



Kelso, WA

Were camping with four friends on the Green River, 14 miles north of Mount St. Helens. Crall had recently lost his job at a Weyerhaeuser lumber mill; Varner worked as receptionist at a doctor's office. As the blast cloud approached, Crall jumped into their tent to warn Varner. Clapsed in each other's arms, they both died of head injuries caused by a large tree that fell onto their tent.

Joel K. Colten (29)

12/30/1950

Wyncote, PA

A poet, retail brass works dealer, and co-editor of a literary journal. In early May, Colten loaded up his Volkswagen Dasher with camera equipment and headed west. On the morning of May 18, he was parked near the roadblock on the Spirit Lake Highway and taking photographs of the volcano from the hood of his car.

In June 1981, construction workers found Colten's boot, sock, and parts of his body in the mudflow along the North Fork of the Toutle River.

Ronald Lee Conner (45)

8/7/1936


Tacoma, WA

Ronald was a member of the US Army for eight years where he served in Germany, Italy, and in Korea during that conflict. He was a port engineer for Kaiser Aluminum and Chemical, Inc. He had a wife, four daughters, and a son who had been killed in an auto accident. Ronald died of ash asphyxiation on the east side of Ryan Lake, 12.5 miles northeast of the mountain.




MOUNT ST. HELENS VICTIMS FOUND (2 OF 3)

<p>Clyde Andrew Croft (37) 12/14/1942 Roy, WA</p>	<p>He was a grocery warehouseman from Puyallup, Washington. He had been camping with his friend Al Handy near the Polar Star Mine on the Green River. When the blast cloud overtook their camp, he dived into the Green River and covered himself with a sleeping bag. A combat veteran of the Vietnam War, Croft began walking toward safety when the ash fall subsided. He had covered 8 miles by the time the ash in his lungs made it impossible to breathe. His body was found near the edge of the road down which he had been walking.</p>
<p>Arlene H. Edwards (37) 3/30/1943 Jolene H. Edwards (19) 3/20/1961 Portland, OR</p>	<p>Left their Portland, Oregon, home on the morning of May 18 and wound Arlene's Dodge pickup up logging roads to a viewpoint south of Elk Rock, 10 miles northwest of the mountain. Arlene was a freelance photographer; Jolene was a waitress engaged to her high school sweetheart. They scrambled up to the 3,800-foot summit with their dogs and were taking photographs when the mountain erupted. The blast blew Arlene from the summit onto a hemlock tree below; she died from chest injuries sustained in the impact. Jolene died of ash asphyxiation after she was blown into some trees near her mother's four-wheel drive.</p>
<p>James F. Fitzgerald, Jr. (32) 10/3/1947 Canton, Ohio</p> 	<p>A graduate student from Moscow, Idaho. A former Second Lieutenant in the U.S. Air Force, he lived in Puyallup, Washington, and was working on a PhD in Vulcanology at the time of his death. When the mountain erupted, he took a series of photographs as the blast cloud approached and shoved the camera under the seat of his car. He was found sitting in his blue Datsun near Spud Mountain, 7 miles northwest of Mount St. Helens, dead of ash asphyxiation. The James F. Fitzgerald, Jr. Memorial Scholarship Fund was established in 1980 by family and friends to honor the memory of James F. Fitzgerald, Jr. The scholarship is awarded to an outstanding geology senior selected by the faculty of the Department of Geology.</p>
<p>Allen R. Handy (34) 9/ 10/1945</p>	<p>A grocery warehouseman in Puyallup, Washington. He had been camping with his friend Clyde Croft near the Polar Star Mine on the Green River. When the blast cloud spilled over the ridge to the south and filled the Green River valley, Handy ran toward the mine to take shelter but died of ash asphyxiation about 20 yards away from its entrance. Puyallup, WA</p>
<p>Day Bradley Karr (42) 10/7/1942 Day Andrew Karr (11) 5/6/1969 Michael Murray Karr (9) 10/16/1970 Renton, WA</p>	<p>They were on a camping trip at one of their favorite spots, about 4 miles from the mountain. Bradley, who was an experienced camper, fisherman, and photographer, was co-owner of Sound Produce, a wholesale produce company in Renton, Washington; Andrew and Michael lived with their mother, Barbara Karr, in nearby Maple Valley. Bradley died of ash asphyxiation on a slope near their GMC pickup truck; Andrew died of asphyxiation in the cargo bed of the pickup; and Michael died on the floor of the truck.</p>
<p>Joyce M. Kirkpatrick (33) Harold (Butch) Kirkpatrick (33) Newberg, OR</p>	<p>Were near their camp on a hill northwest of Elk Rock, 12 miles west of Mount St. Helens, when the volcano erupted. Joyce was a supervisor at an egg processing plant and Harold was a pipefitter from Newberg, Oregon. Joyce was divorced and would often take her two sons and daughter on weekend outings to the northwest side of Mount St. Helens, but her children could not make the trip that weekend. Both of the Kirkpatricks died of ash asphyxiation.</p>
<p>Robert Emerson Landsburg (48) 11/13/1931 Portland, OR</p>	<p>A freelance photographer. The weekend of the eruption, he drove his 1969 Dodge station wagon up the South Fork of the Toutle River to take pictures of the mountain. On Saturday evening he camped near the volcano and wrote in his journal, "Feel right on the verge of something." The morning of May 18, he woke early and drove a bit farther up the road, stopping less than 4 miles west of the volcano's summit. He took a series of photographs after the mountain erupted and then lay on top of his backpack in an effort to protect the film. He died near his station wagon of ash asphyxiation. His photographs were later discovered and published.</p>

MOUNT ST. HELENS VICTIMS FOUND (3 OF 3)

<p>William Paul Parker (46) Jean Isabell Parker (56) Portland, OR</p>	<p>William Parker, who worked for the Pacific Northwest Telephone Company, and his wife Jean Parker, a nurse, were in their GMC pickup north of Hanaford Lake, where they had driven Sunday morning to see the volcano. William died of head injuries from an 11-inch-round boulder that crashed through the roof of the pickup; Jean died of ash asphyxiation.</p>
<p>Donald R. Parker (45) Natalie Ali Parker (50) Westport, OR Richard Parker (28) Shelton, WA</p>	<p>Died of ash asphyxiation in a cabin near a gold and silver mine they were developing about 9 miles northeast of the volcano. Both Donald and his nephew Richard worked in the mining industry and hoped to strike it rich on their claim near Mount St. Helens.</p>
<p>Fred D. Rollins (58) Margery Ellen Rollins (52) Hawthorne, CA</p> 	<p>Drove their station wagon to the roadblock northwest of the mountain on the morning of May 18. Fred was a retired security guard for Air Research Manufacturing. When the volcano erupted, they drove 80 mph down the Spirit Lake Highway in an attempt to get away. A car passed them from behind and its occupants survived, but the Rollins disappeared in the blast cloud. Fred died of burns and ash asphyxiation beside the car, and Margery died in the passenger's seat from ash asphyxiation.</p>
<p>Paul F. Schmidt (29) Silverton, OR</p>	<p>Headed toward Mount St. Helens on May 17 to take pictures of the volcano. He drove his red Toyota to near Spud Mountain, 7 miles northwest of the volcano. His remains were discovered beneath a log by salvage cutters in July 1982.</p>
<p>Barbara Lea (Morris) Seibold (33) Ronald Dale Seibold (41) Kevin Morris (7) Michelle Morris (9) Olympia, WA</p>	<p>They drove their Chevrolet Blazer from Olympia, Washington, to see the mountain with Barbara's children. Ron was an engineer at the DOT and president of the Olympia branch of the Mountaineers. Barbara was a teacher's aide at Olympia High School. Located about 3 miles northwest of Coldwater I and 11 miles NW of the volcano, they drove for a mile and took several photographs of the blast cloud before it overtook them. The entire family died of ash asphyxiation.</p>
<p>Donald James Selby (48) Everett, WA</p>	<p>An unemployed millwright, drove to the Spud Mountain area with friend Brad Backstrom on the weekend of the eruption, hoping to take photographs of the volcano that they could sell. The morning of May 18, Backstrom decided to head down the South Fork of the Toutle River in his Celica for supplies. When the mountain erupted, Selby was near his pickup on Spud Mountain, 7 miles northwest of Mount St. Helens. He died of traumatic injuries suffered in the blast.</p>
<p>Leonty V. Skorohadoff (30) Woodburn, OR Evlanty Sharipoff (41) Mt. Angel José Dias (33) Woodburn, Oregon</p>	<p>A four-man logging team doing contract work for Weyerhaeuser 13 miles NW of the mountain. When the blast cloud hit the men were badly burned and covered in ash. After taking shelter in their pickup, they began to walk down a logging road toward the North Fork of the Toutle River. Around 11 AM, Sharipoff broke off from the group, and 15 minutes later Dias did the same. To escape a mudflow, Sharipoff climbed a hemlock tree, and he died there of ash asphyxiation. Dias was discovered later that day by a National Guard helicopter sitting on a root ball of a large tree caught in a mudflow. He died of pulmonary and skin burns about two weeks later. Also rescued by helicopter, Skorohodoff died from burns and acute pneumonia about a week after the eruption.</p>
<p>Klaus Zimmerman (27) Spokane, WA</p>	<p>A commercial artist born in Hamburg, Germany. On May 15, he left his home to take pictures of the mountain. When Mount St. Helens erupted, his car was hit by a mudflow on the Spirit Lake Highway a mile above Camp Baker, near the North Fork of the Toutle River, about 15 miles northwest of the mountain. He died of ash asphyxiation in the front seat of his car.</p>

MOUNT ST. HELENS VICTIMS NEVER FOUND (1 OF 2)

<p>Wallace Norwood Bowers (41) Winlock, WA Thomas G. Gadwa (35) Montesano, WA</p>	<p>Logging near Shultz Creek which runs from Fawn Lake to the Green River. Bowers' wife had cancer, and he was moonlighting weekends, after working for Weyerhaeuser during the week, to pay her bills. Though Bowers' wallet was found two years later, the two men's bodies were never recovered.</p>
<p>Ellen Loy Dill Robert W. Dill Kirkland, WA</p>	<p>Robert and his wife Ellen were on their way to the Wenatchee Apple Blossom Festival in their motor home. Robert was born in Cosmopolis and knew the area very well, having hunted and fished around Mt St Helens all his life. They were stopping to take pictures of the mountain before heading to Wenatchee. That is the last they were ever heard from. Robert had been in the auto service industry all his life in the Seattle area and his wife Ellen was about to retire from Boeing.</p>
<p>Bruce Edward Faddis (26) Bend, OR</p>	<p>Worked at Black Butte Ranch Resort near Bend, Oregon as a fireman. That weekend he packed up his sister's Datsun station wagon, his Martin guitar, and departed for the Mountain, never to return. Enthusiastic, funny, honest, and willing to help anybody, he was last seen around 12:30 PM on May 17 about 8 miles west of the volcano.</p>
<p>Paul Hiatt</p>	<p>residence unknown</p>
<p>David A. Johnston (30) </p>	<p>Volcanologist who was monitoring Mount St. Helens for signs of an eruption from a ridge 5 miles north of the mountain. Before the eruption, he often flew on helicopters into the crater and onto the side of the volcano to collect water and gas samples. He was substituting for a younger colleague on the morning of the eruption and had never been to the observation post before the previous afternoon. Caught in the blast cloud, Johnston's body, his car, and the trailer in which the geologists had been living were swept off the ridgeline and have never been found. The David A. Johnston Cascade Volcano Observatory in Vancouver, WA was dedicated to Johnston's memory on May 18, 1982. https://eruptionbook.com/book/dave-johnston/</p>
<p>Robert M. Kaseweter (39) Beverley Wetherald (35) Portland, OR</p>	<p>Employees of the Portland General Electric utility company. They convinced law enforcement authorities to let them conduct a photographic study of the volcano from Kaseweter's cabin, which was about two miles down the north fork of the Toutle River from Spirit Lake. Besides Harry Truman, they were the only two people inside the red zone when the volcano erupted. The cabin and about 80 cabins and other structures nearby were completely buried when the north flank of the volcano collapsed.</p>
<p>John G. Killian (29) Christy Killian (20) Vader, Washington  </p>	<p>Both were Weyerhaeuser employees. They were camping at Fawn Lake, 9 miles and three ridgelines north of the mountain. John was a graduate of Toledo High School. His body was never found after the eruption, which led his family to conclude that he was fishing on a rubber raft when the blast cloud swept across the lake. Christy's body was identified by the wedding band on her left hand. The two had only been married for 7 months. John's mother and aunt publish a cookbook in memory of John and Christy. All proceeds went to a scholarship fund for Toledo High graduates.</p>
<p>Robert Lynds (25) Kelso, WA</p>	<p>Camping by himself north of the mountain when it erupted. His shredded tent, pieces of his clothing, and remnants of his pickup were found near Hanaford Lake, but his body was never recovered.</p>

MOUNT ST. HELENS VICTIMS NEVER FOUND (2 OF 2)

<p>Gerald O. Martin (64) Concrete, WA</p>	<p>A volunteer volcano watcher/ham radio operator posted near Coldwater Peak, 8 miles NW of the mountain and was monitoring the mountain for the Radio Amateur Civil Emergency Service. The day before the eruption, he drove his motor home onto a ridge a couple miles north and slightly higher than the geologists' observation post. When the mountain erupted, he reported to the other ham operators monitoring the volcano, "Gentlemen, the camper and car that's sitting over to the south of me is covered. It's going to hit me, too." As with Dave Johnston, no trace of Martin or his motor home was ever found.</p>
<p>Mark Melanson MN</p>	<p>Missing on Cowlitz County WA Emergency Service Management list.</p>
<p>Gerald Moore, Shirley Moore Keith A. Moore, Kelso, WA</p>	<p>Not heard from since the eruption. Camping at Tradedollar Lake while Keith was fishing from Green River</p>
<p>Edward Joseph Murphy (62) Eleanor Jeanne Murphy (57) Renton, WA</p>	<p>Parked their cream-colored motor home at the roadblock 11 miles west of the mountain on May 17. Edward was a retired planner for the Boeing Company; Eleanor was a retired secretary and former gift shop manager. The morning of May 18, Edward drove to Kid Valley in his Plymouth and was driving back with breakfast when the mountain erupted. Other cars left the roadblock, but the motor home remained behind. Neither of the Murphys were seen again.</p>
<p>Merlin James (Jim) Pluard (60) Ruth Kathleen Pluard (56) Toledo, WA</p>	<p>Left their home at about 7:30 AM Sunday morning so that Jim, a long-time Weyerhaeuser foreman, could check on his crew's logging equipment. They would have reached the site where Jim's crew was logging, on the back side of the ridge where Dave Johnston was stationed, at about the same time the volcano erupted. The Pluards and their yellow Weyerhaeuser pickup were never seen again. The Pluard Memorial Picnic takes place every year in honor of their memory.</p>
<p>Dale Douglas Thayer (36) Kelso, WA</p>	<p>Whereabouts unknown, but reported on sheriff's missing list after the May 18 eruption and has not been seen since. He was unemployed.</p>
<p>Harry R. Truman (84)  Spirit Lake, WA</p>	<p>He was the long-time owner and operator of the Mount St. Helens Lodge, which was on the southern shore of Spirit Lake beneath the northern flank of the volcano. When the first earthquakes occurred under the mountain in March 1980, he became a national celebrity for refusing to leave his property. He had been granted special permission to remain inside the Red Zone. Profane, hard-drinking, sentimental, and stubborn, Truman enjoyed his notoriety but also feared what the mountain might do to him. Harry was last seen about 6 p.m. May 17 at his lodge by Spirit Lake, five miles north of Mount St. Helens. When Mount St. Helens erupted cataclysmically on May 18, 1980, he was buried under several hundred feet of avalanche debris. His body has never been found. Harry's Ridge and the Truman Trail were named in his honor. He had run the Mount St. Helens Lodge on Spirit Lake since 1928.</p>
<p>Velvetia (Velvet) Tute (52) James S. Tute (56) Mission, Canada</p>	<p>They went down to the volcano with their dog and in their Volkswagen van the weekend of May 17-18 so Velvetia could paint the volcano. James worked on tugboats in British Columbia. They had two sons - Brock and Darryl. They were last seen driving their Volkswagen van about 13 miles west of the volcano. Their bodies, van, and dog were never recovered. Aside from the sons, James Tute was survived by his brother Charlie Tute of Langley, B.C., sister Mary Thompson of Vancouver, B.C., and sister Dorothy Sloan of Saltspring Island, B.C.</p>
<p>Steven A. Whitsett (17) Houston</p>	<p>Missing; Father reported his son planned to hitchhike to Mount St. Helens</p>

CROSSWORD PUZZLE

PRINT THIS PAGE TO SOLVE THE PUZZLE. ANSWERS ARE ON THE LAST PAGE. NO PEEKING!

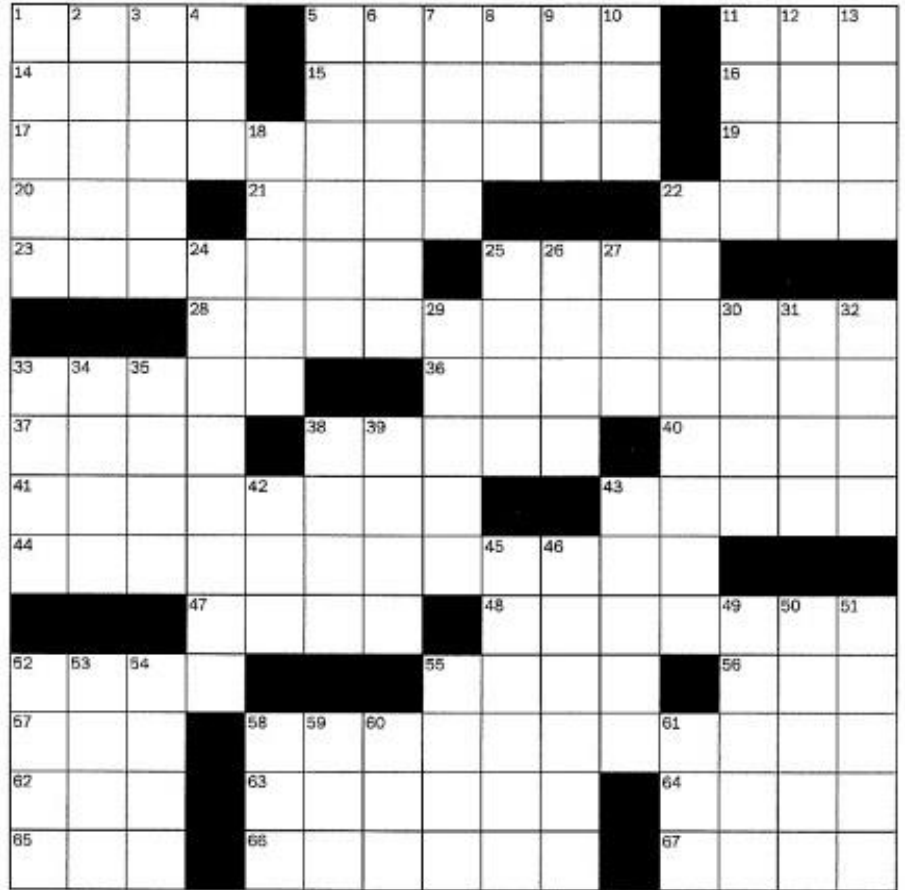
ACROSS

- 1 Mother's nickname
- 5 Wound
- 11 Leopard or lynx
- 14 Actor Alda
- 15 Oklahoma athlete
- 16 The Grand __ Opry
- 17 Street art involving knitted wool
- 19 Can. lawmakers
- 20 "ru 4 reall?"
- 21 Famous __ cookies
- 22 Remainder
- 23 Bird that may wake up the farm every morning
- 25 Minnesota neighbor
- 28 Internet troll who takes over a discussion
- 33 At the right moment
- 36 Insufficiently
- 37 Close by
- 38 Fresh as a __
- 40 Smart-mouthed
- 41 Dangling pieces of jewelry
- 43 Brewery shipments
- 44 Concept in particle physics
- 47 Young woman
- 48 Cleans one's teeth, in a way
- 52 Pottery wheel material
- 55 Panorama

- 56 401(k) kin
- 57 Chest bone
- 58 Access points for some treehouses
- 62 "It's __ good"
- 63 Pancake mixture
- 64 Self-images
- 65 "Toodles!"
- 66 Like a lawn
- 67 Extremely

DOWN

- 1 Big city bigwig
- 2 San Antonio landmark
- 3 Emmy-winning actress Martindale
- 4 __ Arbor, Michigan
- 5 Chemically related compound
- 6 "That'll do"
- 7 ZipRecruiter listings
- 8 Bi- minus one
- 9 Darth Vader's grandson Kylo __
- 10 Rowing machine, familiarly
- 11 Beckoning word
- 12 Swiss ski destination
- 13 Exam
- 18 Wash
- 22 IndyCar venues
- 24 In a way that's meant to last
- 25 "Beware the __ of March"



- 26 Member of the "Love Train" soul group
- 27 Tail movement
- 29 Horse-and-buggy sect
- 30 Singer Kristofferson
- 31 "If all __ fails ..."
- 32 Some deli loaves
- 33 Tip jar bills
- 34 Nicely organized
- 35 "Virgin River" novelist Robyn
- 38 Kennel barkers
- 39 Some rentals, for short
- 42 Genetic material whose first letter stands for "ribo"
- 43 Stadium throng
- 45 Submits tax returns online
- 46 Name associated with the Great Chicago Fire
- 49 Prolonged battle
- 50 Shortstop's blunder
- 51 Smart-mouthed
- 52 Grumpy sort
- 53 __ of the valley
- 54 Skilled
- 55 Pet docs
- 58 Supreme Court justice known as "Notorious," initially
- 59 Boat blade
- 60 School support gp.
- 61 Actor Patel

SUDOKU (EASY)

PRINT THIS PAGE TO SOLVE THE SUDOKU.
ANSWERS ARE ON THE LAST PAGE. NO PEEKING!

6		9	5					1
	3		4			6	7	
		1		7				2
		8			7			3
	9			8			4	
7			2			8		
2				6		1		
	1	6			3		2	
3					4	9		6

HOMES PENDING & SOLD IN 98686



\$288,000 Last Sold Price
2 Beds 2 Baths 960 Sq. Ft.
13216 NE Salmon Creek Ave Unit H1, Vancouver, WA 98686



\$405,000 Last Sold Price
3 Beds 2 Baths 1,408 Sq. Ft.
1705 NE 150th St, Vancouver, WA 98686



\$485,000 Last Sold Price
3 Beds 2.5 Baths 2,050 Sq. Ft.
4405 NE 112th Cir, Vancouver, WA 98686



\$567,000 Last Sold Price
3 Beds 2.5 Baths 2,207 Sq. Ft.
10704 NE 68th Ave, Vancouver, WA 98686



\$475,000 Last Sold Price
3 Beds 2 Baths 1,332 Sq. Ft.
1711 NE 149th Cir, Vancouver, WA 98686



\$705,000 Last Sold Price
4 Beds 2.5 Baths 2,816 Sq. Ft.
4109 NE 107th St, Vancouver, WA 98686



\$570,000 Last Sold Price
3 Beds 2 Baths 1,754 Sq. Ft.
13606 NE 62nd Ct, Vancouver, WA 98686



\$464,000 Last Sold Price
3 Beds 2.5 Baths 1,682 Sq. Ft.
1720 NE 146th St, Vancouver, WA 98686



\$759,914 Last Sold Price
3 Beds 3 Baths 2,585 Sq. Ft.
4620 NE 118th St, Vancouver, WA 98686



\$499,900 Last Sold Price
3 Beds 2.5 Baths 1,701 Sq. Ft.
1934 NE 102nd Cir, Vancouver, WA 98686



\$474,900 Last Sold Price
3 Beds 2.5 Baths 1,472 Sq. Ft.
3211 NE 120th Cir, Vancouver, WA 98686



\$660,000 Last Sold Price
4 Beds 2 Baths 2,145 Sq. Ft.
10307 NE 27th Ave, Vancouver, WA 98686



\$492,900 Last Sold Price
3 Beds 2.5 Baths 1,701 Sq. Ft.
1927 NE 101st Cir, Vancouver, WA 98686



\$492,900 Last Sold Price
4 Beds 2.5 Baths 1,779 Sq. Ft.
3113 NE 120th St, Vancouver, WA 98686



\$521,455 Last Sold Price
3 Beds 2.5 Baths 1,842 Sq. Ft.
18205 NE 46th Ave Lot 59, Vancouver, WA 98686



\$659,455 Last Sold Price
4 Beds 2.5 Baths 2,001 Sq. Ft.
18006 NE 46th Ct Lot 30, Vancouver, WA 98686



AMBERGLEN CONNECTIONS

APRIL TRIVIA ANSWERS

1. Blue Jeans
2. The same day of the week
3. Smaller
4. True
5. Judo
6. Test for COVID-19
7. False. It was \$87,700
8. American President
9. Jamaica

CROSSWORD PUZZLE ANSWERS

1	M	A	M	A		5	I	N	J	U	R	E		11	C	A	T
14	A	L	A	N		15	S	O	O	N	E	R		16	O	L	E
17	Y	A	R	N	B	O	M	B	I	N	G		19	M	P	S	
20	O	M	G		21	A	M	O	S				22	R	E	S	T
23	R	O	O	S	T	E	R		25	I	O	W	A				
				28	T	H	R	E	A	D	J	A	C	K	E	R	
33	O	N	C	U	E			36	M	E	A	G	E	R	L	Y	
37	N	E	A	R		38	D	A	I	S	Y		40	W	I	S	E
41	E	A	R	D	R	O	P	S			43	C	A	S	E	S	
44	S	T	R	I	N	G	T	H	E	O	R	Y					
				47	L	A	S	S		48	F	L	O	S	S	E	S
52	C	L	A	Y				55	V	I	E	W		56	I	R	A
57	R	I	B		58	R	O	P	E	L	A	D	D	E	R	S	
62	A	L	L		63	B	A	T	T	E	R		64	E	G	O	S
65	B	Y	E		66	G	R	A	S	S	Y		67	V	E	R	Y

SUDOKU ANSWERS

6	7	9	5	3	2	4	8	1
8	3	2	4	9	1	6	7	5
5	4	1	6	7	8	3	9	2
4	2	8	9	1	7	5	6	3
1	9	5	3	8	6	2	4	7
7	6	3	2	4	5	8	1	9
2	5	4	7	6	9	1	3	8
9	1	6	8	5	3	7	2	4
3	8	7	1	2	4	9	5	6